

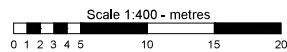


IAQ Map Legend - Winter Operation

- Natural ventilation: Operable windows and/or louvres should be used to manage fresh air, balancing thermal comfort and ventilation.
- Mechanical ventilation: Fresh air is introduced by the heating, ventilation and air conditioning system when in operation. Windows can remain closed and no action is required by the school.

Note: White spaces are to be used in accordance with COVID-19 requirements and current health advice.

ISSUE	AMENDMENT	DRAWN	VER'D	APPR'D	DATE



SCALE
1:400
DATE
JULY 2017
DRAWING SHEET SIZE = A3



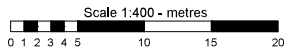
PROJECT
LANYON HIGH SCHOOL
INFRASTRUCTURE & CAPITAL WORKS
SCHOOL LAYOUT PLAN
GROUND FLOOR - PART 1

For Continuation Refer Part 1



For Continuation Refer Part 2

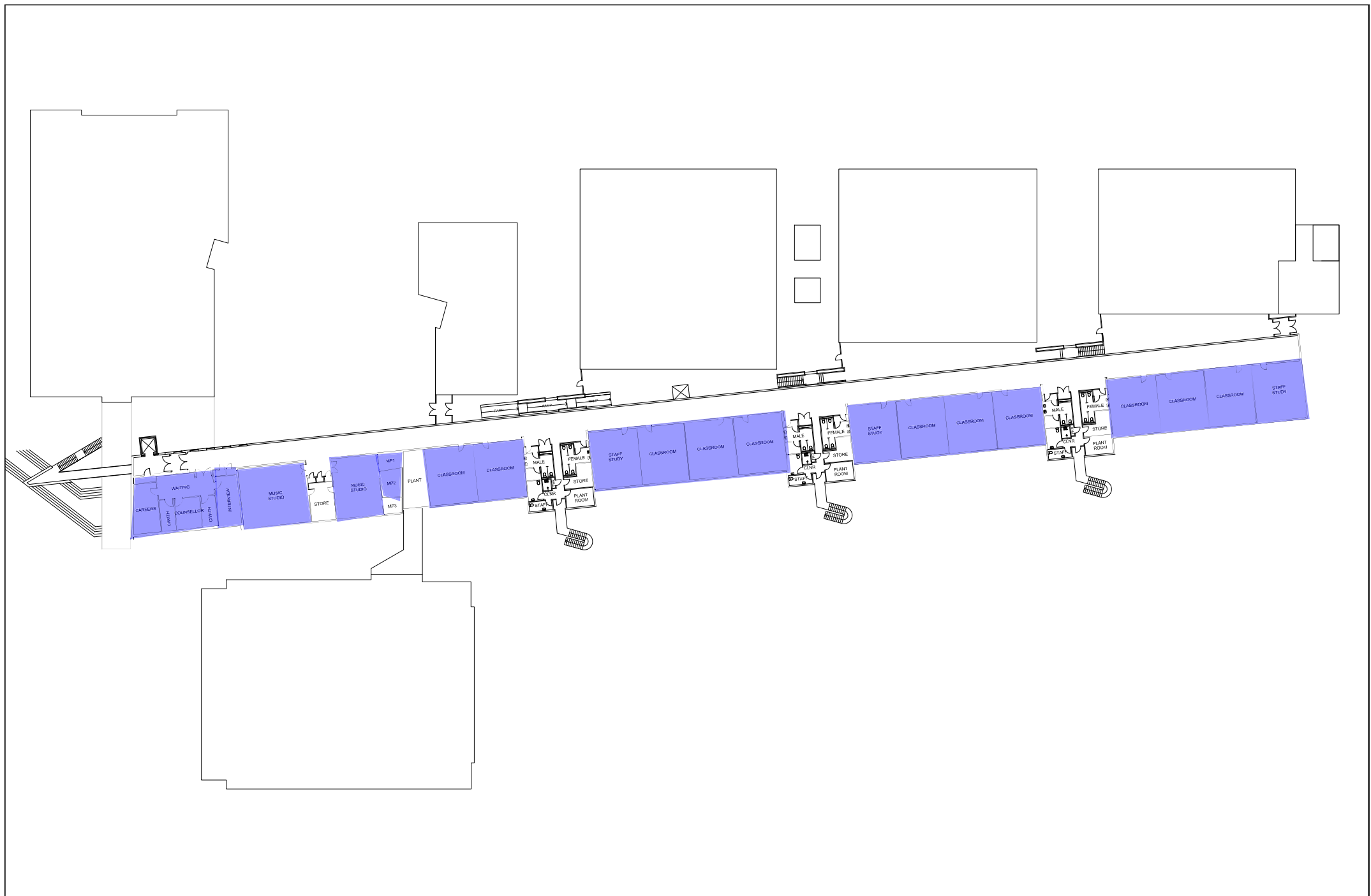
ISSUE	AMENDMENT	DRAWN	VERD	APPR	DATE



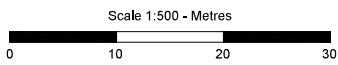
SCALE
1:400
DATE
JULY 2017
DRAWING SHEET SIZE = A3



PROJECT
LANYON HIGH SCHOOL
INFRASTRUCTURE & CAPITAL WORKS
SCHOOL LAYOUT PLAN
GROUND FLOOR - PART 2



ISSUE	AMENDMENT	DRAWN	VER'D	APP'D	DATE



SCALE
1:500
DATE
JULY 2017
DRAWING SHEET SIZE = A3



PROJECT
LANYON HIGH SCHOOL
INFRASTRUCTURE & CAPITAL WORKS
SCHOOL LAYOUT PLAN
FIRST FLOOR